

Six-axis robot instruction manual

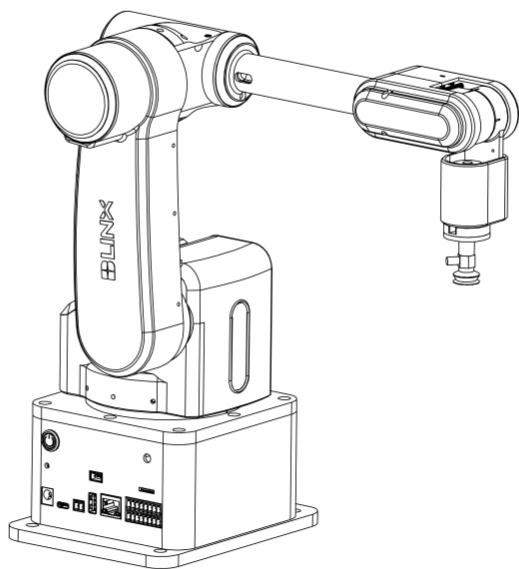
OpenR6

LargeModel

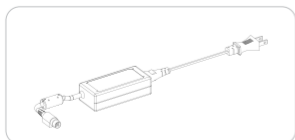
VisualPerception

Multi-machine

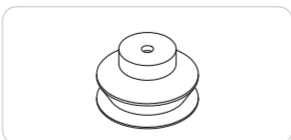




Robotx1



Power Adapter x 1



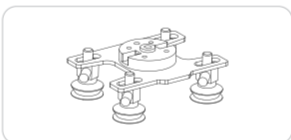
Nozzles x 3



Trachea x2



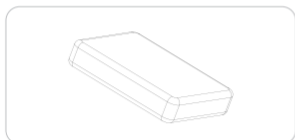
Motorized jaws x 1



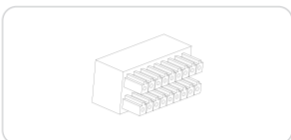
Four suction cups x 1



Network cable 1.5 meters



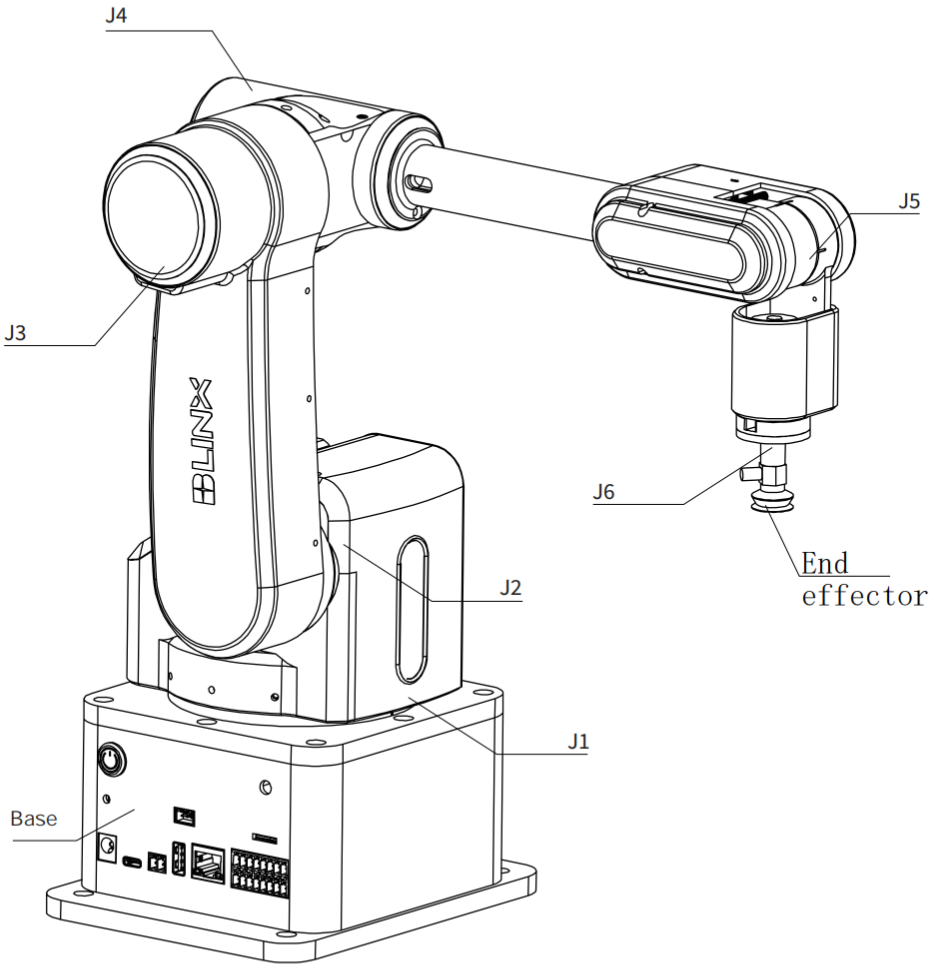
Tool kit x 1

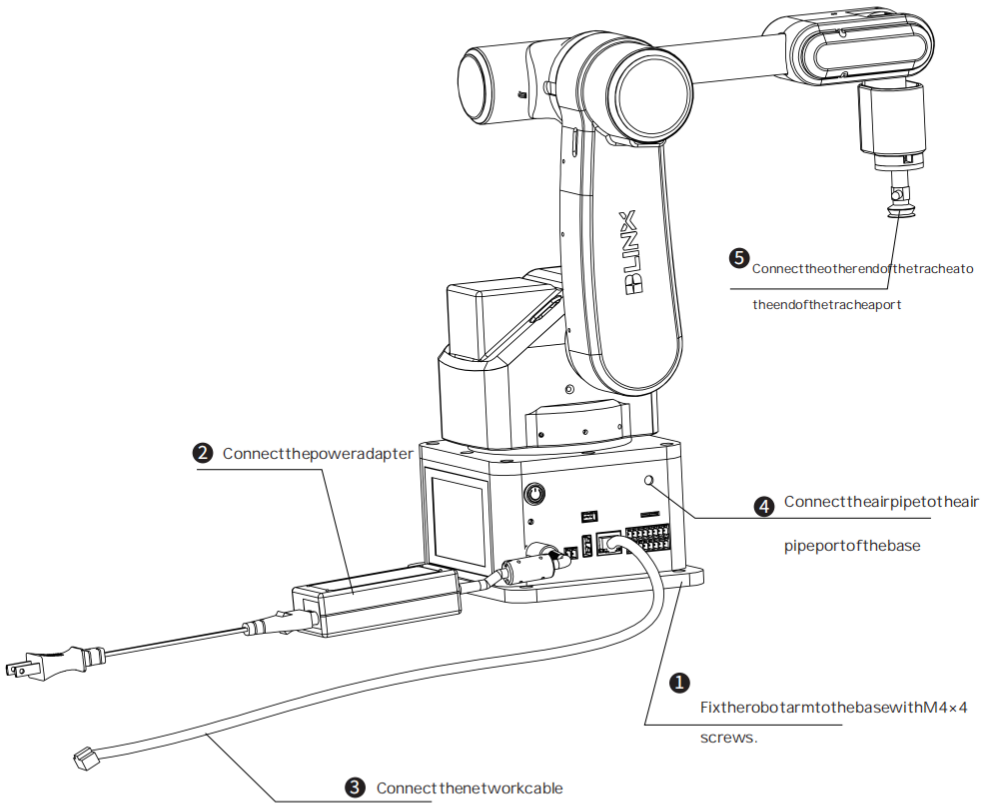


IO terminal x1



Information USB flash drive x 1





Chassis touch screen controlled robotic

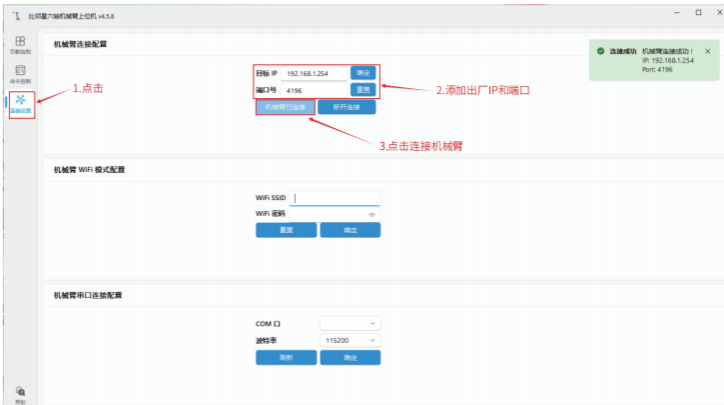
After the power is turned on, press the robot arm power on button and wait for the interface loading to be completed, then the robot arm can be controlled through the touch screen.

(See the Six-Axis Robot User's Manual for details on how to operate the robot)



Upper computer software to control the robotic

1. Open the software of the host computer, input the IP and port number of the robot arm, the host computer connects to the factory IP:192.168.1.254 , port: 4196. Click "Connect robot arm", when the upper right corner of the interface displays "Connection Successful", the robot arm is connected successfully.



2. After the robot arm is successfully connected, switch to the "Teaching Control" page, click the "Initialization" button, and wait for the robot arm to execute the action.

When finished, you can proceed to the next operation. (See the Six-Axis Robot User's Manual for more information on how to operate the robot.)

